

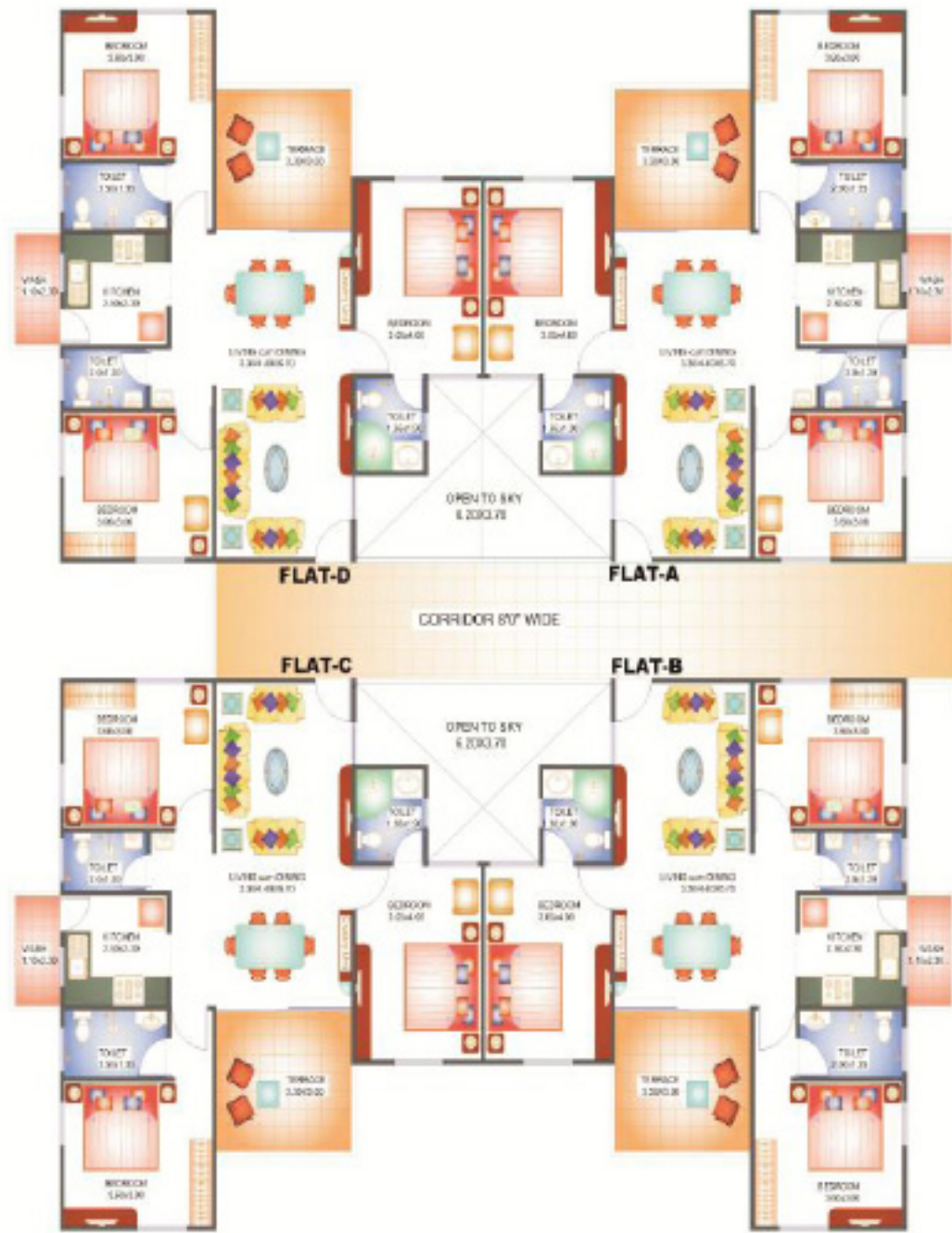
2 BHK UNIT PLAN (Block No. 1, 2, 3 & 4) ■ 240 Unit

UNIT COST OF BLOCK NO. 1, 2, 3 & 4 (2 BHK)

Flat Type	A	B	C	D	E	F
Total Flats in Ten Floor	40	40	40	40	40	40
Super B/Up Area (Sqm)	136.50	130.92	128.50	128.50	130.92	136.50
Cost (In Lacs)	28.65	27.50	27.00	27.00	27.50	28.65

Note : Cost is same for all Floor





3 BHK UNIT PLAN (Block No. 5,6,7,8,9,10,11&12) ■ 280 Unit

UNIT COST OF BLOCK NO. 5,6,7,8,9,10,11 &12 (3 BHK)

Flat Type	A	B	C	D
Total Flats in Ten Floor	60	80	80	60
Super B/Up Area (Sqm)	161.47	161.47	161.47	161.47
Cost (In Lacs)	36.80	36.80	36.80	36.80

Note : Cost is same for all Floor





2 BHK UNIT PLAN (Block No. 13,14,15,16 &17) ■ 210 Unit

UNIT COST OF BLOCK NO. 13,14,15,16 & 17 (2 BHK)

Flat Type	A	B	C	D
Total Flats in Ten Floor	60	50	50	50
Super B/Up Area (Sq.m)	135.87	135.87	135.87	135.87
Cost (In Lacs)	28.60	28.60	28.60	28.60

Note : Cost is same for all Floor



2 BHK UNIT PLAN (Block No. 13,14,15,16 &17)

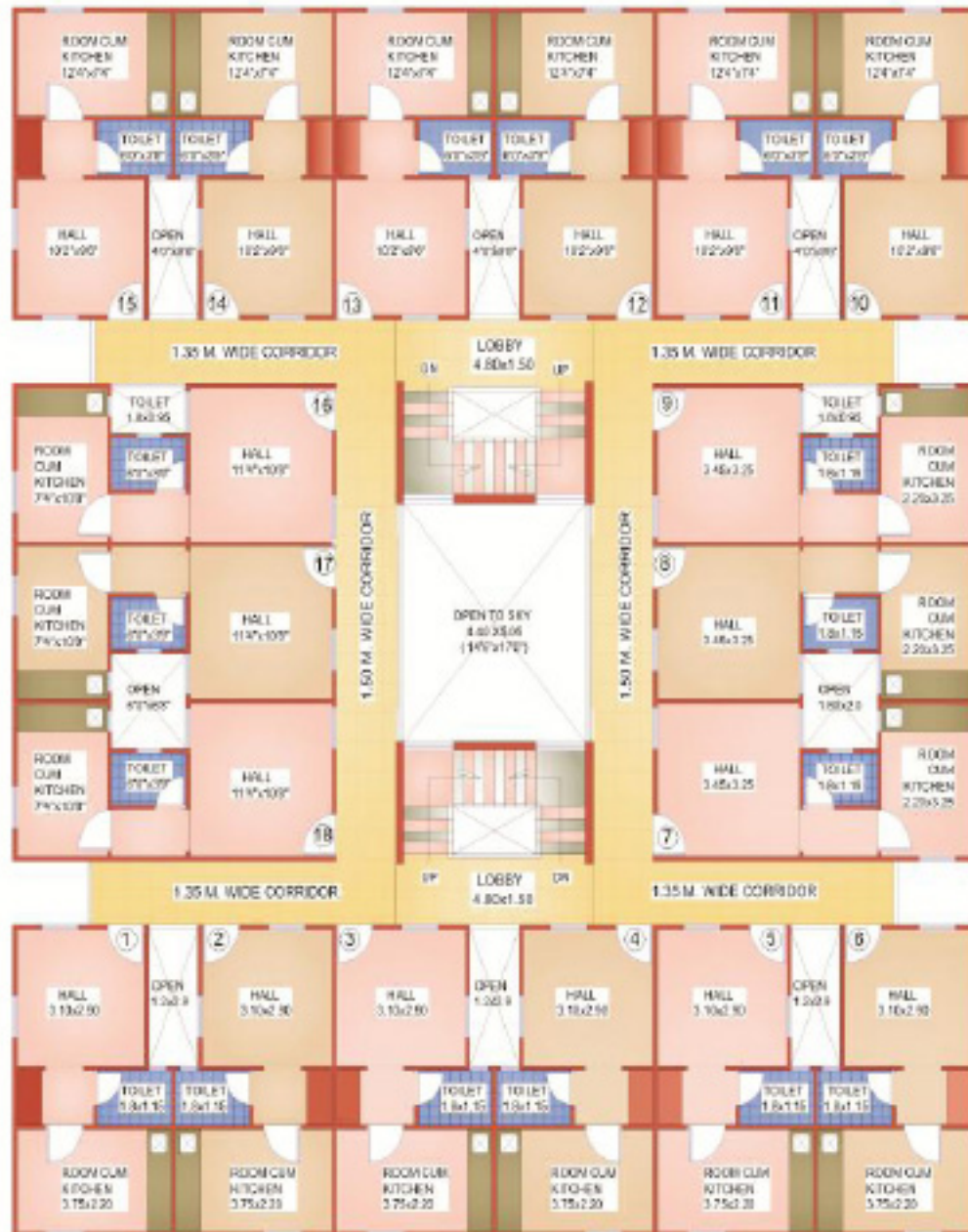


LIG BLOCK (1 BHK) ■ 44 Unit

LIG BLOCK (1 BHK)

Flat Type	A	B	C	D	E
Total Flats in Nine Floor	9	9	9	9	8
Super B/Up Area (Sqm)	78.57	78.57	78.57	78.57	76.51
Cost (In Lacs)	16.50	16.50	16.50	16.50	16.20

Note : Cost is same for all Floor



EWS BLOCK ■ 66 Unit

EWS BLOCK

Total flats in four floor

1st Floor 2nd Floor 3rd Floor 4th Floor

18 18 18 12

Super B/Up Area (Sqm)

41.50

Cost (In Lacs)

7.50

Note : Cost is same for all Floor

